



Hoppings

QUALITY PRODUCTS

PRODUCT GUIDE: SmartBoard Decking



Freephone Hoppings Helpline 0800 8496339



Contents:

SmartBoard Fact Sheet	Page 1
SmartBoard Chocolate Brown	Page 2
SmartBoard Battleship Grey	Page 3
SmartBoard Slate Grey	Page 4
SmartBoard Fixing Advice	Page 5
SmartBoard Handling & Storage / What to Expect	Page 6
SmartBoard Cleaning & Maintenance	Page 7
Appendix 1: Warranty Information for SmartBoard	Page 8

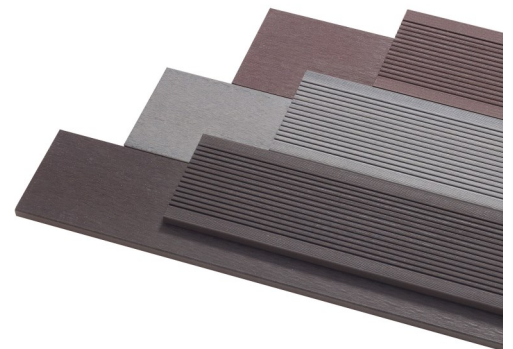


Wood Composite Decking

What's special about our product? SmartBoard is a reversible face fix decking with an appealing, tactile brushed matt finish available in a range of naturally varying colour tones.



- **Looks like decking, is simple to fix**
- **Style** Solid core, **Smart looking compared to our competitors equivalent**
- **Size** 20 x 138 x 3600mm
- **Profile** Smooth/Ribbed
- **Pack size** 112pcs /pack Slate
112pcs /pack Battleship Grey
112pcs /pack Chocolate Brown



Technical aspects

- **Constitution**
60% wood residue
30% recycled high density polyethylene (shampoo bottles)
10% additives. Special additives minimise longitudinal expansion.
- **Fixing** Face fix. Special screws must be used with impact driver. 2 screws per joist
- **Span** 400mm joist centres domestic loading (commercial to be determined) .
- When laying SmartBoard in a diagonal 45 degree pattern the supporting joists must be brought in to 295mm centres.
- **Gaps** 5mm between sides and ends of adjacent boards. 10mm gap against a permanent structure
- **Colour** Like other composites SmartBoard will lighten over first few months and then settle
- **Weight** 3.7Kg/m
- **Warranty** 25 years residential, 10 commercial/public (details to follow)

Hoppings Softwood Products PLC.

Epping / Lingfield

The Woodyard, Epping Road.

Epping, Essex. CM16 6TT

Sales -

Tel. 01992 578877

Fax. 01992 561385

Freephone Hoppings Helpline 0800 8496339



Wood Composite Decking



SmartBoard Chocolate Brown Composite Decking

20 x 138 x 3600mm (Finished Size)



A reversible deckboard with a matt, brushed, modern looking finish, The Smartboard composite deckboard is an obvious choice for the discerning builder. Made specifically to emulate softwood decking, it is fitted in a very similar way, giving ease of use for landscapers and DIY enthusiasts alike.

It comes with a 25 year manufacturers warranty, and in three colours – Chocolate Brown, Battleship Grey and Slate.



Hoppings Softwood Products PLC.

Epping / Lingfield

The Woodyard, Epping Road.

Epping, Essex. CM16 6TT

Sales -

Tel. 01992 578877

Fax. 01992 561385

Freephone Hoppings Helpline 0800 8496339

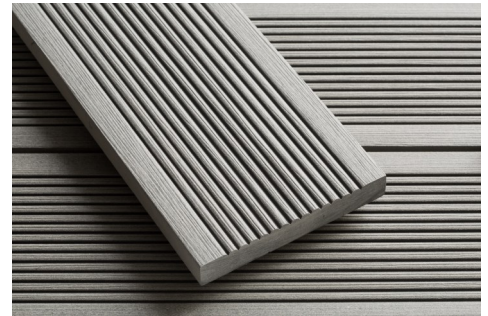


Wood Composite Decking



SmartBoard Battleship Grey Composite Decking

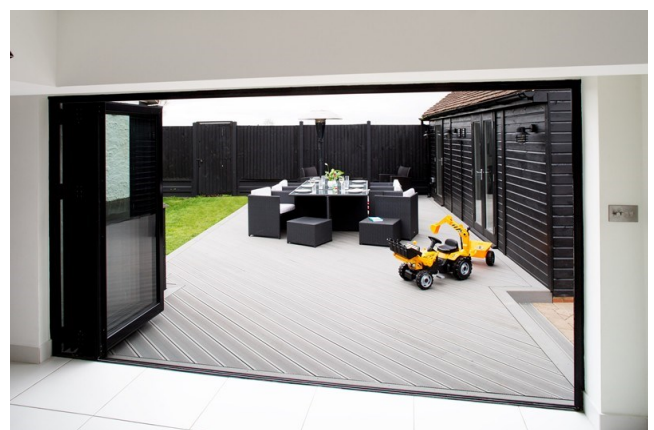
20 x 138 x 3600mm (Finished Size)



A reversible deckboard with a matt, brushed, modern looking finish, The Smartboard composite deckboard is an obvious choice for the discerning builder. Made specifically to emulate softwood decking, it is fitted in a very similar way, giving ease of use for landscapers and DIY enthusiasts alike.

It comes with a 25 year manufacturers warranty, and in three colours – Battleship Grey , Chocolate Brown and Slate.

Made from 90% recycled materials, this board proves that nature & technology can work well, hand in hand.



Hoppings Softwood Products PLC.

Epping / Lingfield

The Woodyard, Epping Road.

Epping, Essex. CM16 6TT

Sales -

Tel. 01992 578877

Fax. 01992 561385

Freephone Hoppings Helpline 0800 8496339

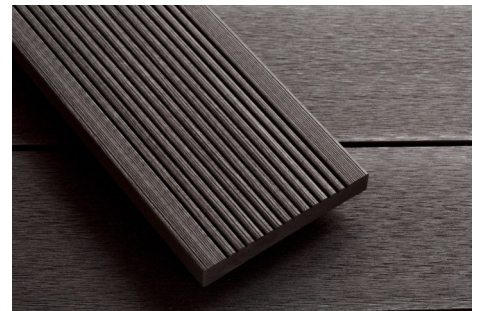
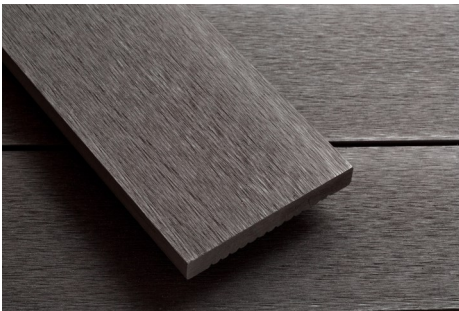


Wood Composite Decking



SmartBoard Slate Grey Composite Decking

20 x 138 x 3600mm (Finished Size)



A reversible deckboard with a matt, brushed, modern looking finish, The Smartboard composite deckboard is an obvious choice for the discerning builder.

Made specifically to emulate softwood decking, it is fitted in a very similar way, giving ease of use for landscapers and DIY enthusiasts alike.

It comes with a 25 year manufacturers warranty, and in three colours – Battleship Grey , Chocolate Brown and Slate.

Made from 90% recycled materials, this board proves that nature & technology can work well, hand in hand.



Hoppings Softwood Products PLC.

Epping / Lingfield

The Woodyard, Epping Road.

Epping, Essex. CM16 6TT

Sales -

Tel. 01992 578877

Fax. 01992 561385

Freephone Hoppings Helpline 0800 8496339





Wood Composite Decking

Fixing advice

Special additives minimise changes in length of boards. As a rule of thumb work to a change on length of +/- 1.0mm/m i.e. 3.6m = +/-3.6mm.

Face fix using 2 no. 63mm SmartBoard Coloured Composite Decking screws per joist.

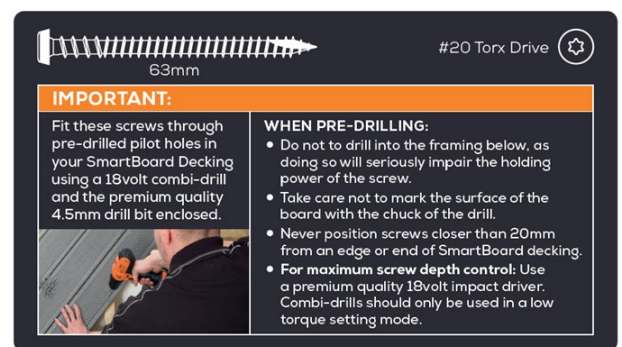
SmartBoard can be worked using standard woodworking tools and if required its edges lightly eased using coarse sand paper (Note: being so dense, it will quickly dull wood working cutters which tends to affect the ability to cut timber products efficiently thereafter).

IMPORTANT. Only use SmartBoard Coloured Composite Decking screws



Fitting

- Fit SmartBoard over double joist construction where boards abut end to end
- Pre-drill two 4.5mm pilot holes at every joist junction, taking care to maintain a 20mm distance to any edge and not to drill into the joist below. Fitting screws through pre-drilled holes eliminates excess drive friction:
 - making for an easier and better job
 - reduces the chance of damaging the screw heads protective coating
 - A neater appearance, as screw head depth is easier to control regardless of the type of drive tool used
 - Screws are easier to extract, should a board need uplifting in the future



The best screw position on the ribbed face of SmartBoard is in the first trough as shown.

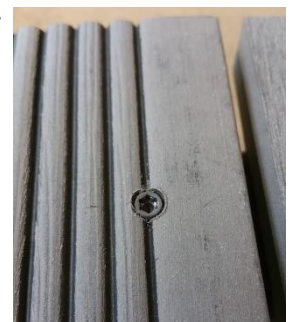
For best results use a high quality cordless impact driver.

These tools provide the most control when seating the head of SmartBoard screws just under the surface of the board. When using a combi-drill, if a suitable torque setting can't be established then take care not to drive the screw too far below the surface of the board when in drill mode (it is wise to stop short of the surface of the board and manually twist the chuck of the drill to achieve optimum screw depth).

The use of any other fixing other than SmartBoard Coloured composite decking screw is prohibited as it will almost certainly cause SmartBoard to crack or shear.

Joist centres - maximum 400mm domestic loading (commercial to be determined in due course).

Leave a 5mm gap between the sides and ends of adjacent boards or fascia. (increase this gap to 10mm gap when adjacent to fixed/permanent structures).



Hoppings Softwood Products PLC.

Epping / Lingfield

The Woodyard, Epping Road.

Epping, Essex.CM16 6TT

Sales -

Tel. 01992 578877

Fax. 01992 561385

Freephone Hoppings Helpline 0800 8496339



Wood Composite Decking



Advice for SmartBoard Customers

Handling & Storage

SmartBoard decking isn't as structurally rigid as timber equivalents meaning more care needs to be taken when storing it on site. Ensure boards are stored flat, off the ground and with sufficient support (at least every 600mm) to prevent sagging and deformation.

Placing, rather than sliding boards on top of one another is preferable when moving boards about on site. Sliding boards over one another may cause marking. If sliding boards is un-avoidable then orientate them ribbed face to ribbed face to reduce the chance of marking.

Colour - What to expect

Please remember, SmartBoard contains wood fibres, susceptible to differences in colour and appearance.

As soon as the product is exposed to sun and rain, these fibres will undergo a natural ageing process and will be subject to colour changes.

After a few months, the final patina will be obtained.

All decking, including wood plastic composite varieties are expected to experience some level of weathering over time.

During the first 12 weeks of exposure to the elements, SmartBoard will typically weather to a slightly lighter shade from the original colour.

This process is a result of a combination of water absorption in the wood fibres and UV stabilisation at the surface of the boards.

Close inspection shows that this colour change or fading is due to the natural bleaching of the wood fibres.

After this initial acclimatising, any colour change will be less visible.

Chocolate Brown and Slate Grey are better at hiding day to day grime compared to the much lighter Battleship Grey, whereas staining created by fat/oils from food stuffs will be more evident on the darker coloured boards.

Regarding removing fatty stains the use of washing up liquid is as good as anything.

The striped look of the ribbed face will become less and less evident upon exposure to natural light until it settles to the colour of the brushed areas.

Colour stain can be used to seal and rejuvenate SmartBoard using CompoCare by Owatrol.

Hoppings Softwood Products PLC.

Epping / Lingfield

The Woodyard, Epping Road.

Epping, Essex. CM16 6TT

Sales -

Tel. 01992 578877

Fax. 01992 561385

Freephone Hoppings Helpline 0800 8496339



Wood Composite Decking



Cleaning & Maintenance

Cleaning SmartBoard straight after fitting is recommended to remove any manufacturing residues and dust and will help minimise any variation on colour as mentioned in the what to expect section on page 8

After exposure to the first bouts of rain, tide marks may appear on the surface of boards.

These tide marks tend to be more prolific the more level the deck, as water pools meaning the surface takes longer to dry.

This feature is associated with the washing effect of the wood fibres of the new SmartBoard and or the mobilization of residual dust created during the manufacturing process.

It is normal for tides to appear on new SmartBoard decking and these will become less apparent with exposure to ultra-violet light and as the washing effect of rain diminishes.

SmartBoard should be kept free of debris by regular sweeping and cleaned when necessary using a stiff bristled brush, warm soapy water and rinse with clean fresh water.

The use of a pressure washer is also fine, whilst taking care not to damage or change the look of the surface of SmartBoard by placing the lance to close to it.

It is also wise to clean a small inconspicuous test area and let it dry before attacking the whole deck with a pressure washer.

Chocolate Brown and Slate Grey are better at hiding day to day grime compared to the much lighter Battleship Grey, whereas staining created by fat/oils from food stuffs will be more evident on the darker Chocolate Brown and Slate and it is therefore wise to take suitable precautions by covering the surface of the deck prior to using a BBQ.

Remove stains caused by fatty foodstuffs using household detergent and hot water.

The dispersal of ice using rock salt is an acceptable course of action and won't affect the surface of the board although it is wise to subsequently rinse the surface with clean water when appropriate.

For a thorough deep clean and to remove most stains including those caused by rust use CompoClean by Owatrol Ltd. Net Trol by Owatrol can be used to remove more stubborn rust stains.

CompoCare by Owatrol Ltd, a brush on colour stain available in grey and brown can be used to seal SmartBoard or strengthen its colour if required.

Appendix 1: Warranty Information for SmartBoard



25 Year (Residential), 10 Year (Commercial) Warranty

Hoppings Softwood Products Plc hereby certify that when fixed appropriately in accordance with the relevant design guidance SmartBoard shall be deemed under warranty for a period of twenty-five (25) years (residential use) and ten (10) years (commercial/public use) from the date of original purchase. **SmartBoard** products shall not split, splinter or suffer structural damage as a sole and direct consequence of termites, insects or soft rotting micro-fungi.

LIMITATIONS

For a period of ten (10) years from the date of original purchase, **SmartBoard** products shall not break. However this warranty explicitly excludes occurrences where the break occurs or may have occurred as a consequence of impact loads or poor design/construction methods.

This warranty applies to the use of products in normal residential use. Contact Hoppings Softwood Products on 01992 578877 if you require a warranty for a deck that is to be created in a commercial type situation.

WHAT'S NOT COVERED

This warranty does not provide protection against misuse, abuse, neglect or improper storage or handling. Hoppings cannot be held responsible for product failure due to improper installation or failure to abide by Hoppings fitting instructions. It also excludes the discolouration/staining of the products due to:

- Air borne pollutants, such as mould, algae, leaf litter and any deposits from plants and trees.
- Any other foreign substances.
- Variations in colour, texture or appearance from one board to another.
- Changes in colour associated with weathering effect of ultra violet light.

UNDERTAKING

The warranty is for the cost of re-supply, by Hoppings, of a component that is proven to have failed as a result of fungal decay or insect/termite attack, FREE OF CHARGE. It does not cover the costs of removal or reinstatement of such components or consequential costs or loss due to failure of the component. The term 'fungal decay' as used in the warranty refers to wood destroying fungi that feed on and degenerate the wood cell walls. It excludes staining and mould fungi associated with the weathering of wood. The term 'failed' refers to damage caused by fungi, insects or termites to such an extent that the component is no longer fit for purpose. In the event of a valid claim being resolved via the supply of a replacement board(s) the colour may be a slightly different.

STATUTORY RIGHTS

This warranty is in addition to the purchaser's normal statutory rights. The warranties are wholesaler/manufacturer to consumer/buyer warranties. However the initial raising of a complaint should be directed to the authorised retailer from where the goods were purchased. The complaint should be made in writing/e-mail and must include proof of purchase ie. a copy or scan of the original invoice.

Hoppings Softwood Products PLC.

Epping / Lingfield

The Woodyard, Epping Road.

Epping, Essex. CM16 6TT

Sales -

Tel. 01992 578877

Fax. 01992 561385

Freephone Hoppings Helpline 0800 8496339

